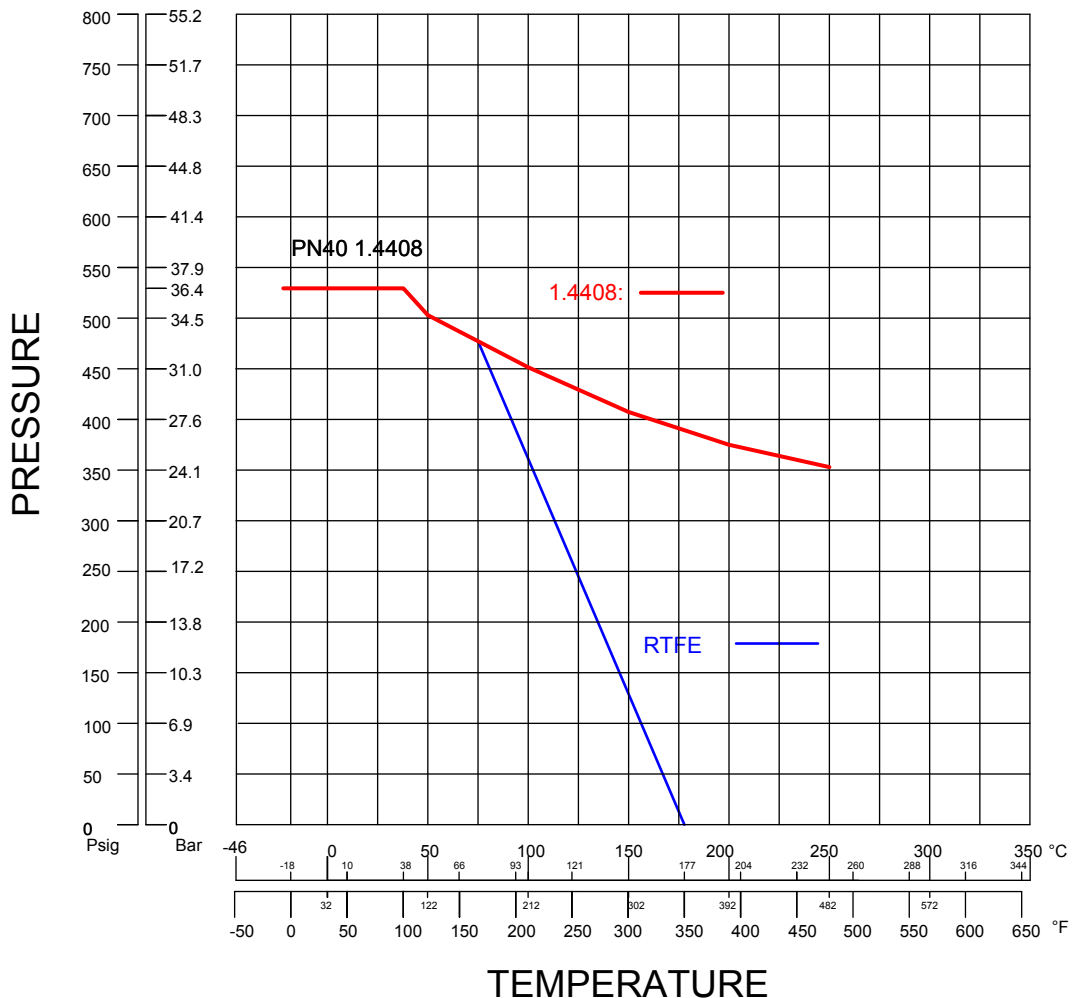


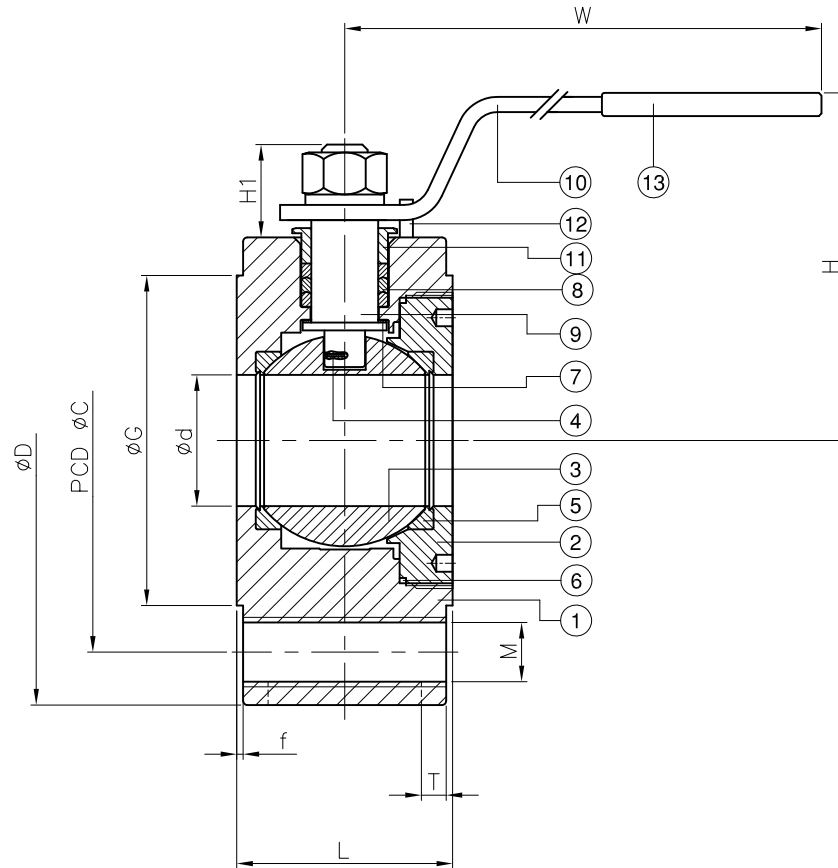
**klepp** *Edelstahlkugelhahn [Stainless Steel Ball Valve] KHN7114*



**TECHNISCHE DATEN [Technical Data]**

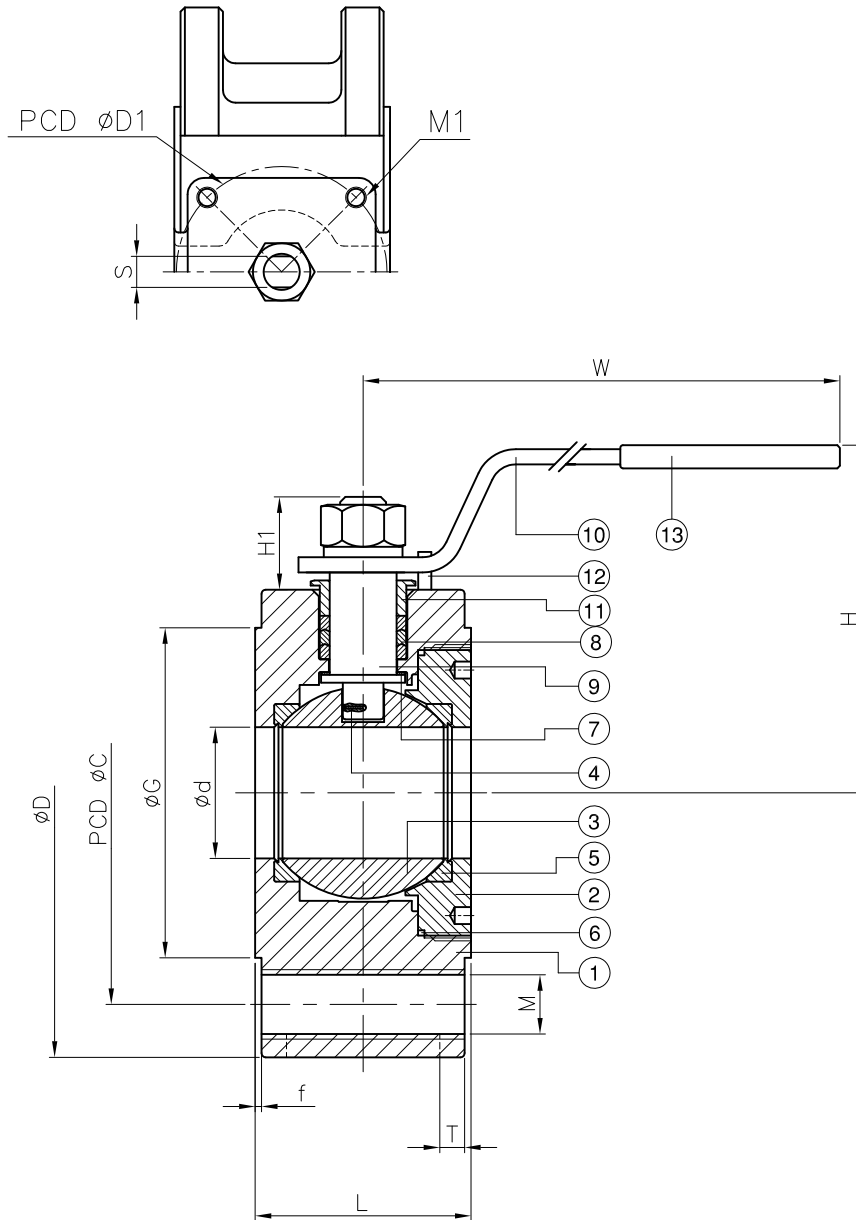
Flansch [Flange]: EN 1092-1  
 Mat.: 1.4408 / RTFE  
 Druck [Pressure]: PN40  
 Temp.: -20°C - +180°C  
 Lieferbar [Available]: DN15 – DN100  
 ISO 5211





ITEM	PARTS	MATERIAL	
1	BODY	1.4408	
2	RETAINER		
3	BALL	ASTM A351-CF8M	
4	ANTI-STATIC DEVICE	AISI 316	
5	BALL SEAT	RTFE	
6	BODY SEAL	PTFE	
7	THRUST WASHER		
8	PACKING		
9	STEM	ASTM A276-316	
10	HANDLE	STAINLESS STEEL	
11	GLAND NUT	AISI 304	
12	STOP PIN		
13	HANDLE SLEEVE	PVC	

DN15 - DN32



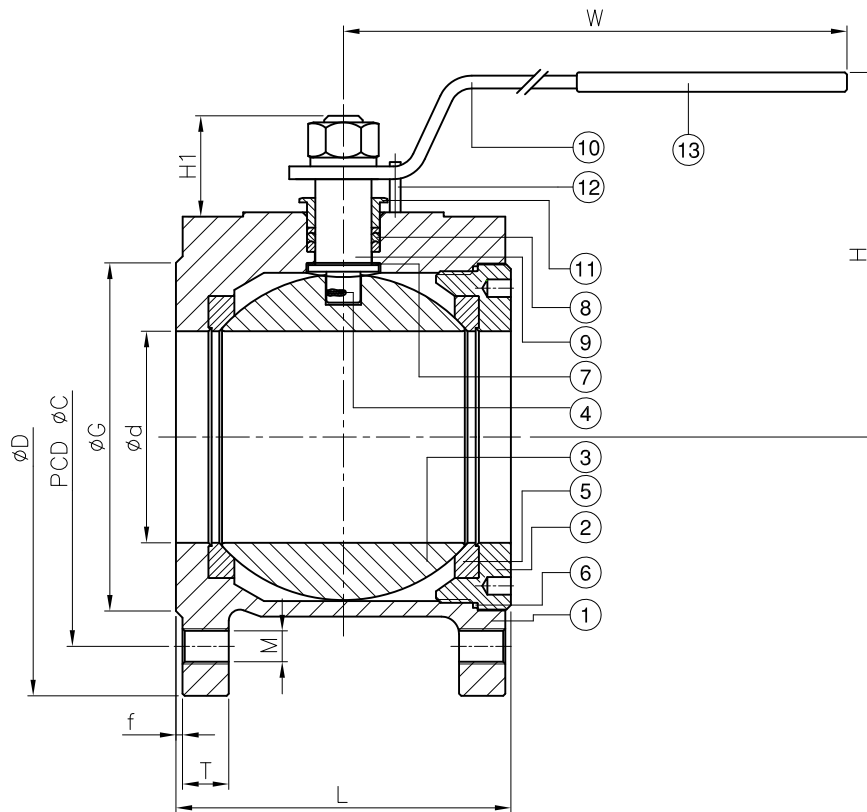
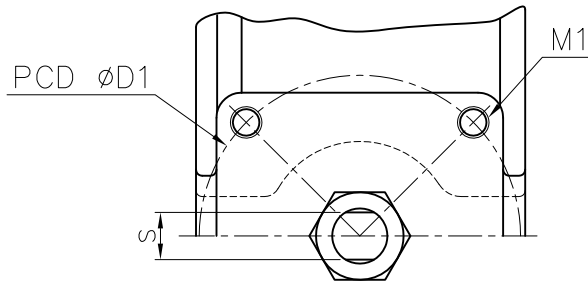
DN	PN	d	G	C	D	L	H	H1	W	S	D1	T	f	M	M1	Torque (N-M)	Weight (kg)
15	PN 16-40	15	45	65	88	36	70	21.7	150	7.8	36	6	1	M12	M5	5.5	1.2
20		20	58	75	98	38	70	22	150	7.8	36	6	1	M12	M5	7.5	1.4
25		25	68	85	108	43	80	25	150	8	36	7	1.75	M12	M5	8.5	1.9
32		32	78	100	128	51	87	28	156	8	36	7	1.5	M16	M5	12	2.9

unit:mm

NPS	PN	d	G	C	D	L	H	H1	W	S	D1	T	f	M	M1	Torque (in-lb)	Weight (lb)
1/2"	PN 16-40	0.59	1.77	2.56	3.46	1.42	2.76	0.85	5.91	0.31	1.42	0.24	0.04	M12	M5	48.7	2.6
3/4"		0.79	2.28	2.95	3.86	1.5	2.76	0.87	5.91	0.31	1.42	0.24	0.04	M12	M5	66.4	3.1
1"		0.98	2.68	3.35	4.25	1.69	3.15	0.98	5.91	0.31	1.42	0.28	0.07	M12	M5	75.2	4.2
1-1/4"		1.26	3.07	3.94	5.04	2.01	3.43	1.1	6.14	0.31	1.42	0.28	0.06	M16	M5	106.2	6.4

unit:in

DN40 - DN100



DN	PN	d	G	C	D	L	H	H1	W	S	D1	T	f	M	M1	Torque (N-M)	Weight (kg)
40	PN 16-40	38	88	110	150	63	102	29	180	10	50	13	1.5	M16	M6	20	4.4
50		50	102	125	165	70	108	29	180	10	50	14	1.5	M16	M6	30	5.6
65	PN 10-16	65	123	145	186	107	143	41	282	12	70	13.5	1.5	M16	M8	50	9.9
80		76	138	160	200	120	152	40	290	12	70	15	2	M16	M8	65	12.6
100		96	158	180	220	152	168	40	325	15	102	17	2.5	M16	M10	90	19.7

unit:mm

NPS	PN	d	G	C	D	L	H	H1	W	S	D1	T	f	M	M1	Torque (in-lb)	Weight (lb)
1-1/2"	PN 16-40	1.5	3.46	4.33	5.91	2.48	4.02	1.14	7.09	0.39	1.97	0.51	0.06	M16	M6	177.0	9.7
2"		1.97	4.02	4.92	6.5	2.76	4.25	1.14	7.09	0.39	1.97	0.55	0.06	M16	M6	265.5	12.3
2-1/2"	PN 10-16	2.56	4.84	5.71	7.32	4.21	5.63	1.61	11.1	0.5	2.76	0.53	0.06	M16	M8	442.5	21.8
3"		2.99	5.43	6.3	7.87	4.72	5.98	1.57	11.42	0.47	2.76	0.59	0.08	M16	M8	575.3	27.8
4"		3.78	6.22	7.09	8.66	5.98	6.61	1.57	12.8	0.6	4.02	0.67	0.1	M16	M10	796.6	43.4

unit:in