

klepp *Edelstahlkugelhahn KHN7114H*



TECHNISCHE DATEN

Flansch [Flange]: EN 1092-1

Mat.: 1.4408 / RTFE

Druck [Pressure]:

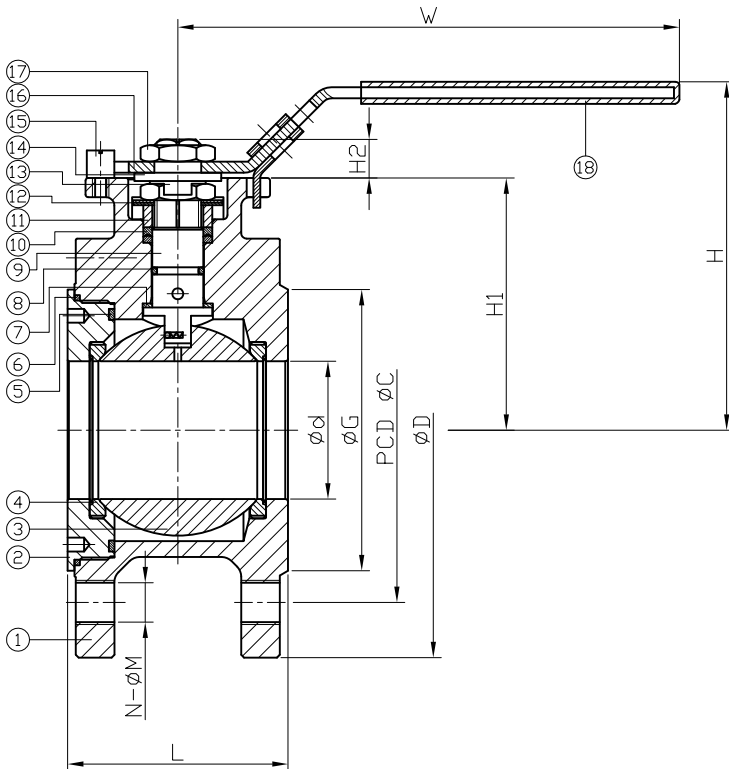
1/2" - 2" PN16/40

>2" PN10/16

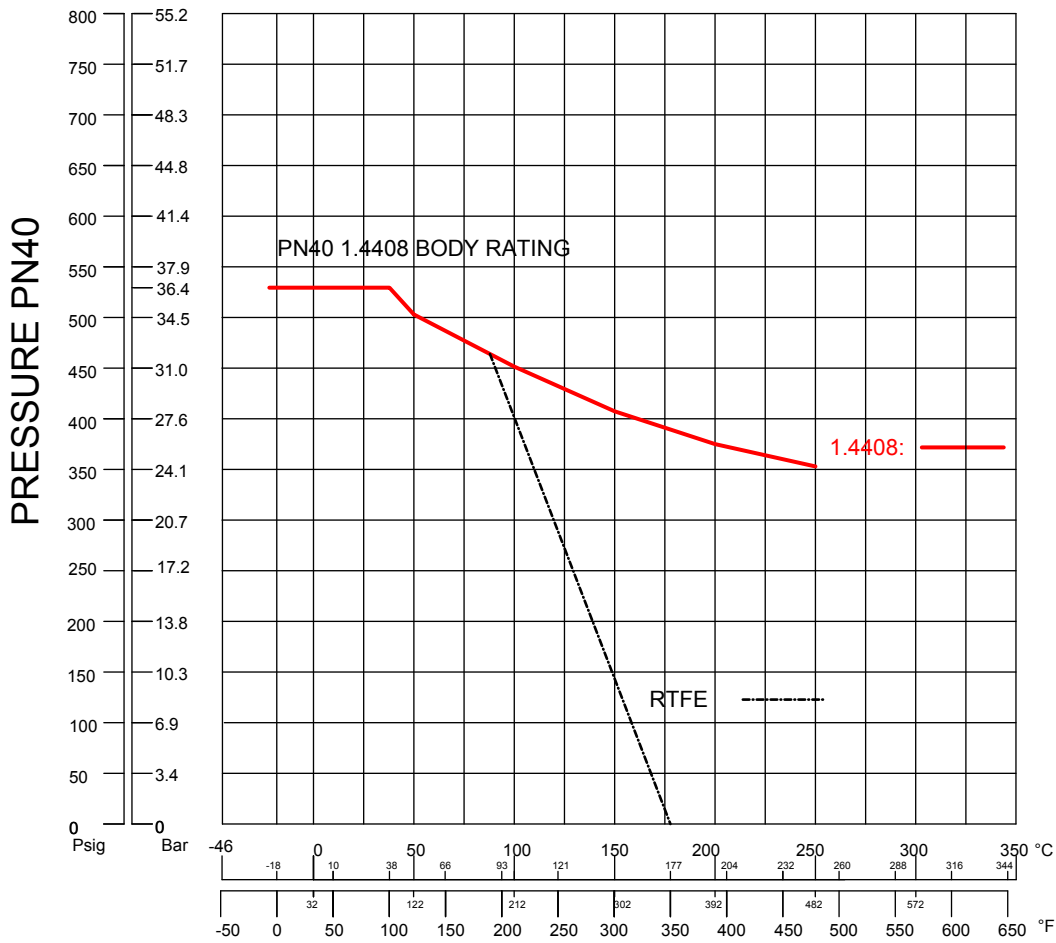
Temp.: -20°C - +200°C

Lieferbar [Available]: DN15 – DN100

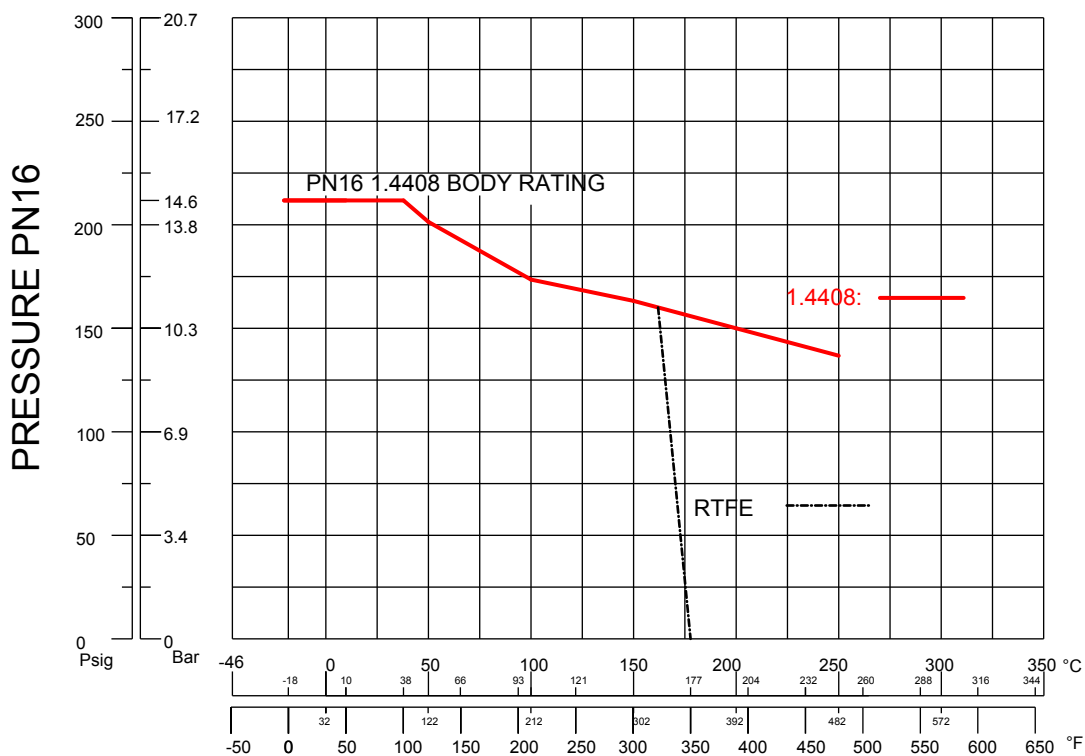
ISO 5211



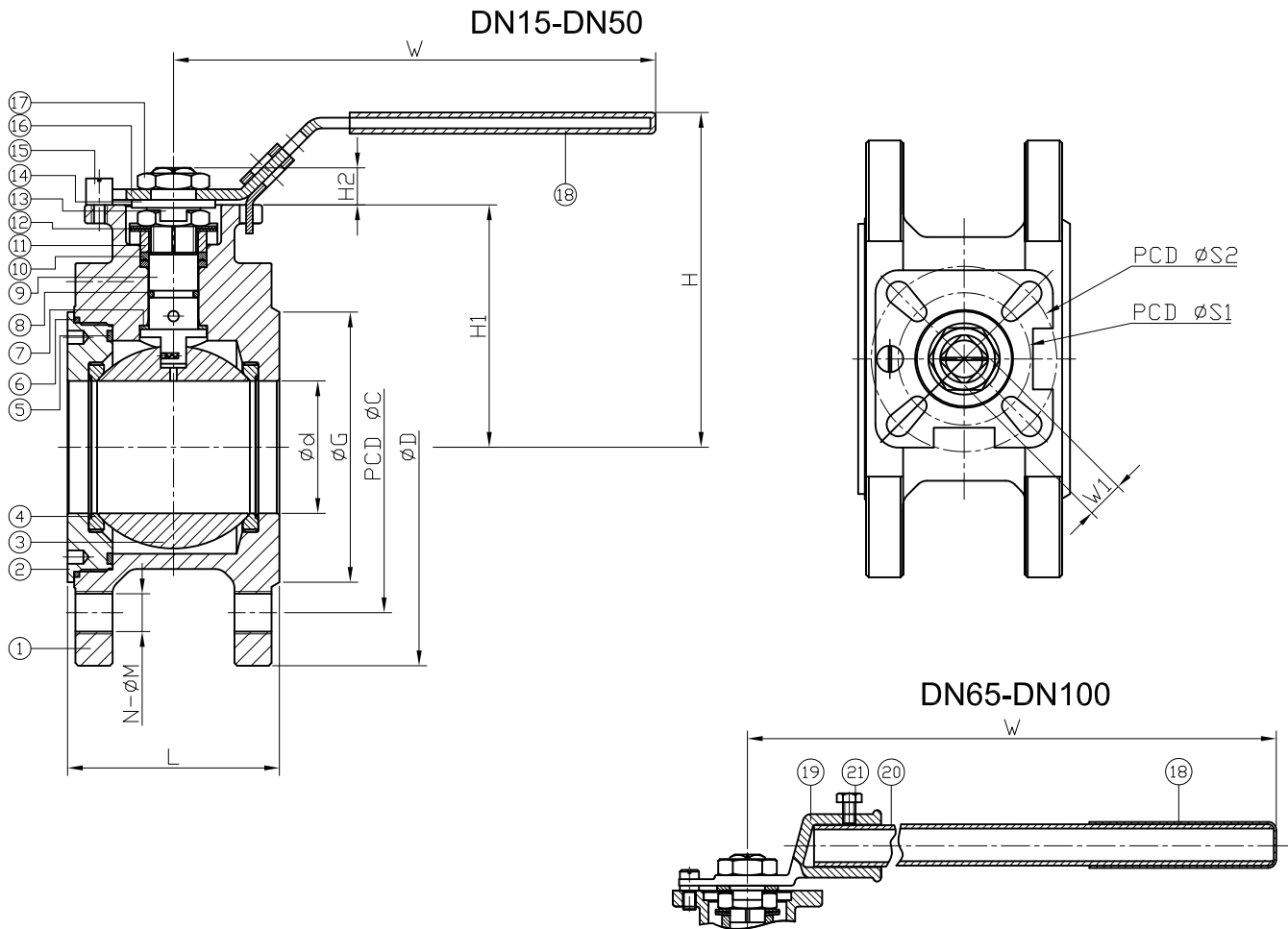
ITEM	PARTS	MATERIAL	
1	BODY	1.4408	1.0619
2	CAP		
3	BALL	ASTM A351-CF8M	
4	SEAT	RTFE	
5	SEAL A	PTFE	
6	SEAL B		
7	THRUST WASHER		
8	O-RING	VITON	
9	STEM	1.4401	
10	PACKING	PTFE	
11	GLAND RING	1.4301	
12	BELLEVILLE WASHER	1.4310	
13	LOCK WASHER	1.4301	
14	FLAT WASHER		
15	STOPPER		
16	HANDLE	STAINLESS STEEL	
17	NUT	1.4301	
18	HANDLE SLEEVE	PVC	
19	HANDLE HEAD	1.4301	
20	STEEL TUBE		
21	BOLT		



TEMPERATURE



TEMPERATURE



DN	d	G	C	D	S1	S2	W	W1	H	H1	H2	N	M	L	Torque (N-m)
15	15	45	65	95	36	42	121.3	9	86	54	9	4	M12	42	6
20	20	58	75	105	36	42	121.3	9	91	59	9	4	M12	44	8
25	25	68	85	115	42	50	150	11	99.5	66	11	4	M12	50	10
32	32	78	100	140	42	50	150	11	111	77.5	11	4	M16	60	15
40	40	88	110	150	50	70	180	14	119	84	14	4	M16	65	22
50	50	102	125	165	50	70	180	14	126.5	91.5	14	4	M16	80	30
65	65	122	145	185	70	102	344	17	147.5	105	17	4	M16	110	45
80	76	138	160	200	70	102	344	17	153.5	111	17	8	M16	120	55
100	96	158	180	220	102	125	390	22	174	131.5	22	8	M16	150	70

unit:mm

NPS	d	G	C	D	S1	S2	W	W1	H	H1	H2	N	M	L	Torque (in-lb)
1/2"	0.59	1.77	2.56	3.74	1.42	1.65	4.78	0.35	3.39	2.13	0.35	4	M12	1.65	53.1
3/4"	0.79	2.28	2.95	4.13	1.42	1.65	4.78	0.35	3.58	2.32	0.35	4	M12	1.73	70.8
1"	0.98	2.68	3.35	4.53	1.65	1.97	5.91	0.43	3.92	2.6	0.43	4	M12	1.97	88.5
1-1/4"	1.26	3.07	3.94	5.51	1.65	1.97	5.91	0.43	4.37	3.05	0.43	4	M16	2.36	132.8
1-1/2"	1.57	3.46	4.33	5.91	1.97	2.76	7.09	0.55	4.69	3.31	0.55	4	M16	2.56	194.7
2"	1.97	4.02	4.92	6.5	1.97	2.76	7.09	0.55	4.98	3.6	0.55	4	M16	3.15	265.5
2-1/2"	2.56	4.8	5.71	7.28	2.76	4.02	13.54	0.67	5.81	4.13	0.67	4	M16	4.33	398.3
3"	2.99	5.43	6.3	7.87	2.76	4.02	13.54	0.67	6.04	4.37	0.67	8	M16	4.72	486.8
4"	3.78	6.22	7.09	8.66	4.02	4.92	15.35	0.87	6.85	5.18	0.87	8	M16	5.91	619.5

unit:in