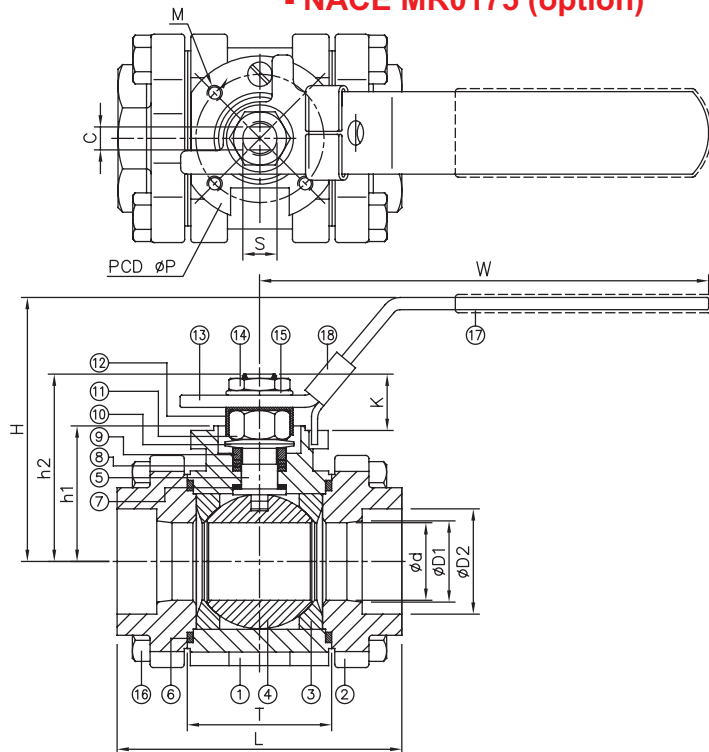


KHN7311HDI Hochtemperaturkugelhahn 3-teilig

- FEATURES**
- Full port, 1/4"~2" (DN8~DN50)
 - W.P. : 3000 WOG (PN200)
 - W.T. : -20°C~260°C (-4°F~500°F)
 - Investment casting
 - Blow-out proof stem
 - Live-loading design
 - Anti-static device (option)
 - Locking device
 - ISO 5211 Mounting pad
 - **ASME B16.34 Wall thickness**
 - **NACE MR0175 (option)**



ITEM	PARTS	MATERIAL
1	BODY	ASTM A351-CF8M
2	CAP	ASTM A351-CF3M
3	SEAT	PEEK
4	BALL	ASTM A351-CF8M
5	STEM	ASTM A276-316
6	SEAL	RTFE
7	THRUST WASHER	RTFE / CTFE
8	PACKING	
9	GLAND RING	AISI 304
10	BELLEVILLE WASHER	AISI 301
11	STEM NUT	AISI 304
12	LOCKING WASHER	
13	HANDLE	STAINLESS STEEL
14	HANDLE NUT	
15	SPRING WASHER	AISI 304
16	BOLT	
17	HANDLE SLEEVE	PVC
18	LOCKING DEVICE	AISI 304

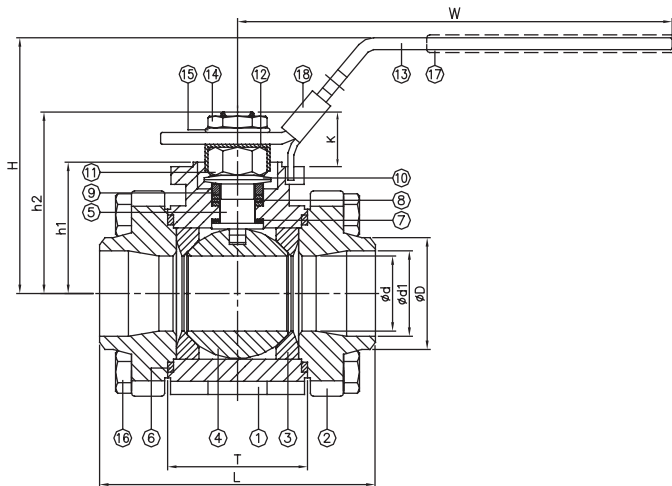
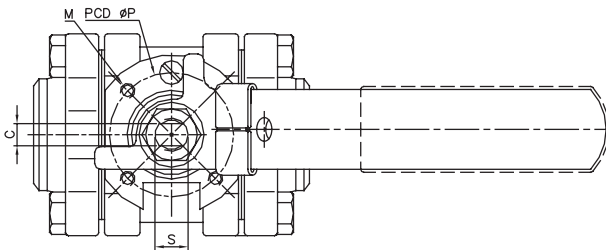
DN	d	D1	D2	L	T	H	W	h1	h2	C	P	M	K	S	Torque (N-m)
8	11.6	-	14	74.8	30.6	61.2	114.5	31.5	45.8	5.7	36	M5	15.3	3/8"-24UNF	8.8
10	12.7	-	18	74.8	30.6	61.2	114.5	31.5	45.8	5.7	36	M5	15.3	3/8"-24UNF	8.8
15	14.3	15.8	22	74.8	30.6	61.2	114.5	31.5	45.8	5.7	36	M5	15.3	3/8"-24UNF	8.8
20	20.7	21	27.5	80	37.8	81.5	147	39.8	55.1	7.5	42	M5	16.8	7/16"-20UNF	16.1
25	25.4	26.6	34.5	93	47	86.2	147	44.4	60	7.5	42	M5	17	7/16"-20UNF	16.1
32	31.5	35	43	109.5	54.3	96.3	178	45.5	73.6	8.6	50	M6	29.6	9/16"-18UNF	32.5
40	38	41	49.5	120.1	62.3	101.1	178	50.3	78.4	8.6	50	M6	29.6	9/16"-18UNF	45.5
50	50.8	52.5	61.5	139.6	78.8	111.6	178	60.8	88.9	8.6	50	M6	29.6	9/16"-18UNF	52

unit:mm

NPS	d	D1	D2	L	T	H	W	h1	h2	C	P	M	K	S	Torque (in-lb)
1/4"	0.56	-	0.55	2.94	1.2	2.41	4.51	1.24	1.8	0.22	1.42	M5	0.6	3/8"-24UNF	77.9
3/8"	0.56	-	0.71	2.94	1.2	2.41	4.51	1.24	1.8	0.22	1.42	M5	0.6	3/8"-24UNF	77.9
1/2"	0.56	0.62	0.87	2.94	1.2	2.41	4.51	1.24	1.8	0.22	1.42	M5	0.6	3/8"-24UNF	77.9
3/4"	0.81	0.83	1.08	3.15	1.49	3.21	5.79	1.57	2.17	0.3	1.65	M5	0.66	7/16"-20UNF	142.5
1"	1	1.05	1.36	3.67	1.85	3.39	5.79	1.75	2.36	0.3	1.65	M5	0.67	7/16"-20UNF	142.5
1-1/4"	1.24	1.38	1.69	4.31	2.14	3.79	7.01	1.79	2.9	0.34	1.97	M6	1.17	9/16"-18UNF	287.6
1-1/2"	1.5	1.61	1.95	4.73	2.45	3.98	7.01	1.98	3.09	0.34	1.97	M6	1.17	9/16"-18UNF	402.7
2"	2	2.07	2.42	5.5	3.1	4.39	7.01	2.39	3.5	0.34	1.97	M6	1.17	9/16"-18UNF	460.2

unit:in

KHN7312HDI Hochtemperaturkugelhahn 3-teilig



FEATURES

- Full port, 1/2"~2" (DN15~DN50)
- W.P. : 3000 WOG (PN200)
- W.T. : -20°C~260°C (-4°F~500°F)
- Investment casting
- Blow-out proof stem
- Live-loading design
- Anti-static device (option)
- Locking device
- ISO 5211 Mounting pad
- **ASME B16.34 Wall thickness**
- **NACE MR0175 (option)**
- Butt weld ends conform to ANSI B16.25 & DIN 3239 part1

ITEM	PARTS	MATERIAL
1	BODY	ASTM A351-CF8M
2	CAP	ASTM A351-CF3M
3	SEAT	PEEK / DELRIN
4	BALL	ASTM A351-CF8M
5	STEM	ASTM A276-316
6	SEAL	RTFE
7	THRUST WASHER	RTFE / CTFE
8	PACKING	
9	GLAND RING	AISI 304
10	BELLEVILLE WASHER	AISI 301
11	STEM NUT	AISI 304
12	LOCKING WASHER	
13	HANDLE	STAINLESS STEEL
14	HANDLE NUT	AISI 304
15	SPRING WASHER	
16	BOLT	
17	HANDLE SLEEVE	PVC
18	LOCKING DEVICE	STAINLESS STEEL

DN	d	D	L	d1	T	H	W	h1	h2	C	P	M	K	S	Torque (N-M)
15	14.3	21.35	74.8	15.8	30.6	61.2	114.5	31.5	45.8	5.7	36	M5	15.3	3/8"-24UNF	8.8
20	20.7	26.65	80	20.9	37.8	81.5	147	39.8	55.1	7.5	42	M5	16.8	7/16"-20UNF	16.1
25	25.4	33.4	93	26.65	47	86.2	147	44.4	60	7.5	42	M5	17	7/16"-20UNF	16.1
32	31.5	42.15	109.5	35.05	54.3	96.3	178	45.5	73.6	8.6	50	M6	29.6	9/16"-18UNF	32.5
40	38	48.25	120.1	40.9	62.3	101.1	178	50.3	78.4	8.6	50	M6	29.6	9/16"-18UNF	45.5
50	50.8	60.3	139.6	52.5	78.8	111.6	178	60.8	88.9	8.6	50	M6	29.6	9/16"-18UNF	52

unit:mm

NPS	d	D	L	d1	T	H	W	h1	h2	C	P	M	K	S	Torque (in-lb)
1/2"	0.56	0.84	2.94	0.62	1.2	2.41	4.51	1.24	1.8	0.22	1.42	M5	0.6	3/8"-24UNF	78.2
3/4"	0.81	1.05	3.15	0.82	1.49	3.21	5.79	1.57	2.17	0.3	1.65	M5	0.66	7/16"-20UNF	142.7
1"	1	1.31	3.66	1.05	1.85	3.39	5.79	1.75	2.36	0.3	1.65	M5	0.67	7/16"-20UNF	142.7
1-1/4"	1.24	1.66	4.31	1.38	2.14	3.79	7.01	1.79	2.9	0.34	1.97	M6	1.17	9/16"-18UNF	287.6
1-1/2"	1.5	1.9	4.73	1.61	2.45	3.98	7.01	1.98	3.09	0.34	1.97	M6	1.17	9/16"-18UNF	402.7
2"	2	2.37	5.5	2.07	3.1	4.39	7.01	2.39	3.5	0.34	1.97	M6	1.17	9/16"-18UNF	460.2

unit:in

DRUCK - TEMPERATUR

