

klepp *Edelstahlkugelhahn KHN7312H / KHN7312HS*



TECHNISCHE DATEN

KHN7312H: Handhebel [Handle]

KHN7312HS: Handhebel + ISO5211 [Handle]

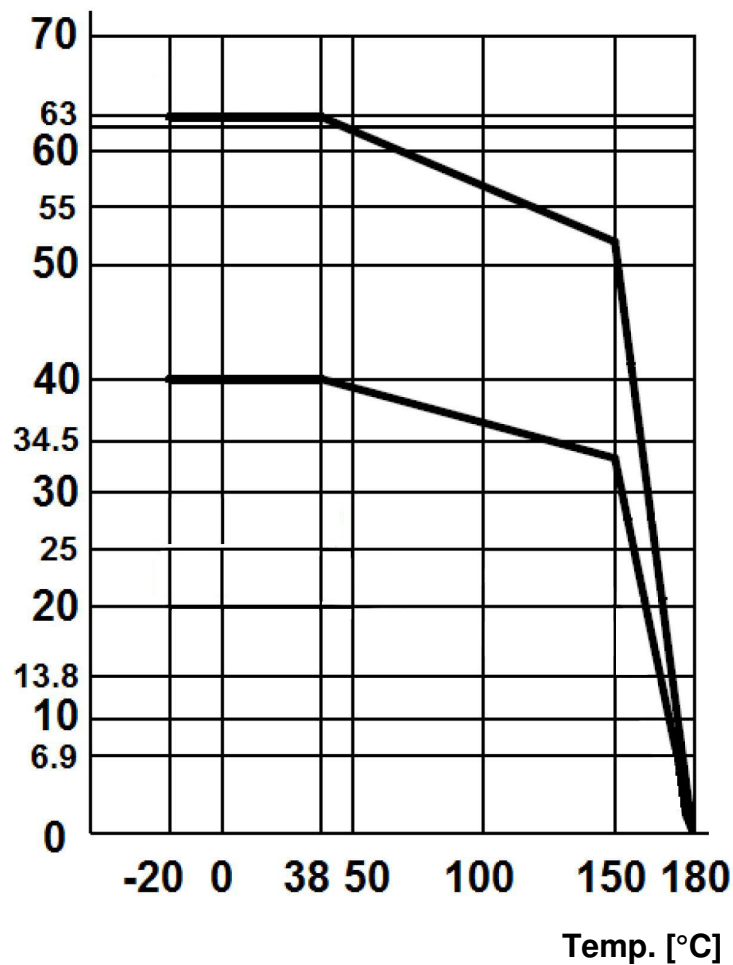
Mat.: 1.4408 / PTFE

Druck [Pressure]: PN63

Temp.: -20°C - +200°C

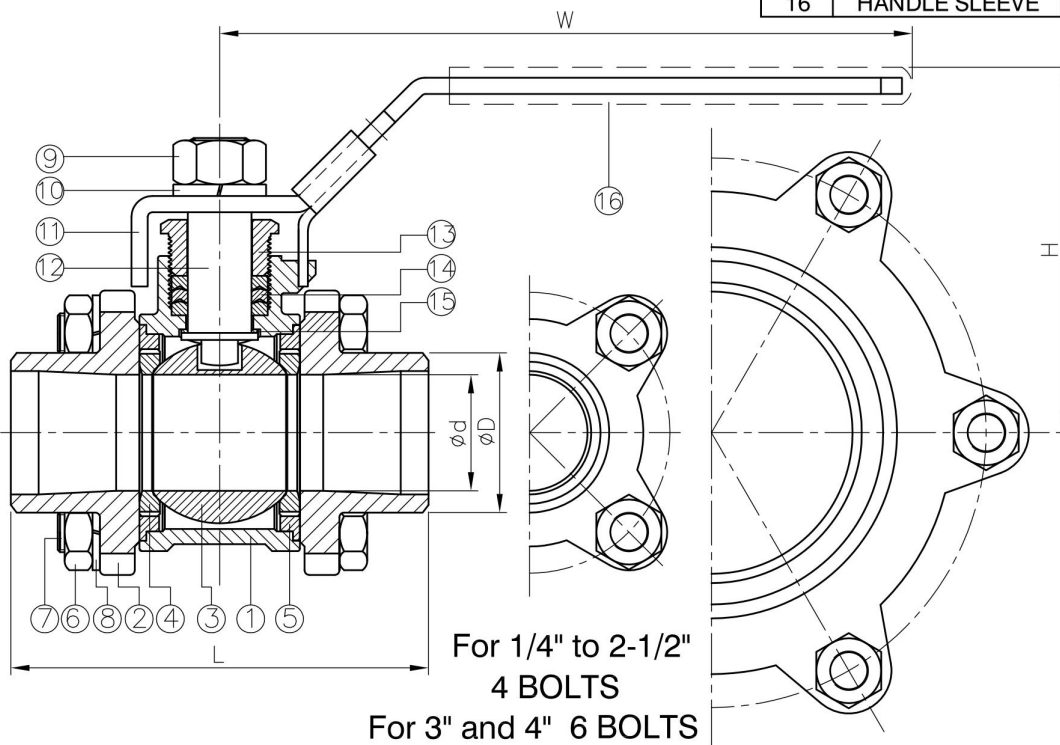
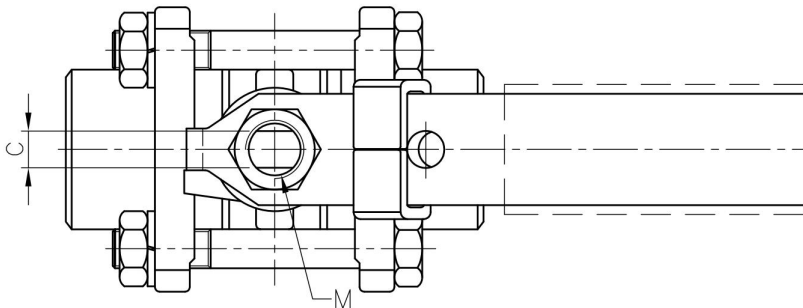
Lieferbar [Available]: DN15 – DN100

Druck [Pressure] [bar]



KHN7312H

ITEM	PARTS	MATERIAL
1	BODY	ASTM A351-CF8M
2	CAP	
3	BALL	
4	BALL SEAT	PTFE
5	BODY SEAL	
6	BOLT NUT	AISI 304
7	BOLT	
8	SPRING WASHER	
9	STEM NUT	
10	SPRING WASHER	
11	HANDLE	STAINLESS STEEL
12	STEM	ASTM A276-316
13	GLAND NUT	AISI 304
14	PACKING	PTFE
15	THRUST WASHER	
16	HANDLE SLEEVE	PVC

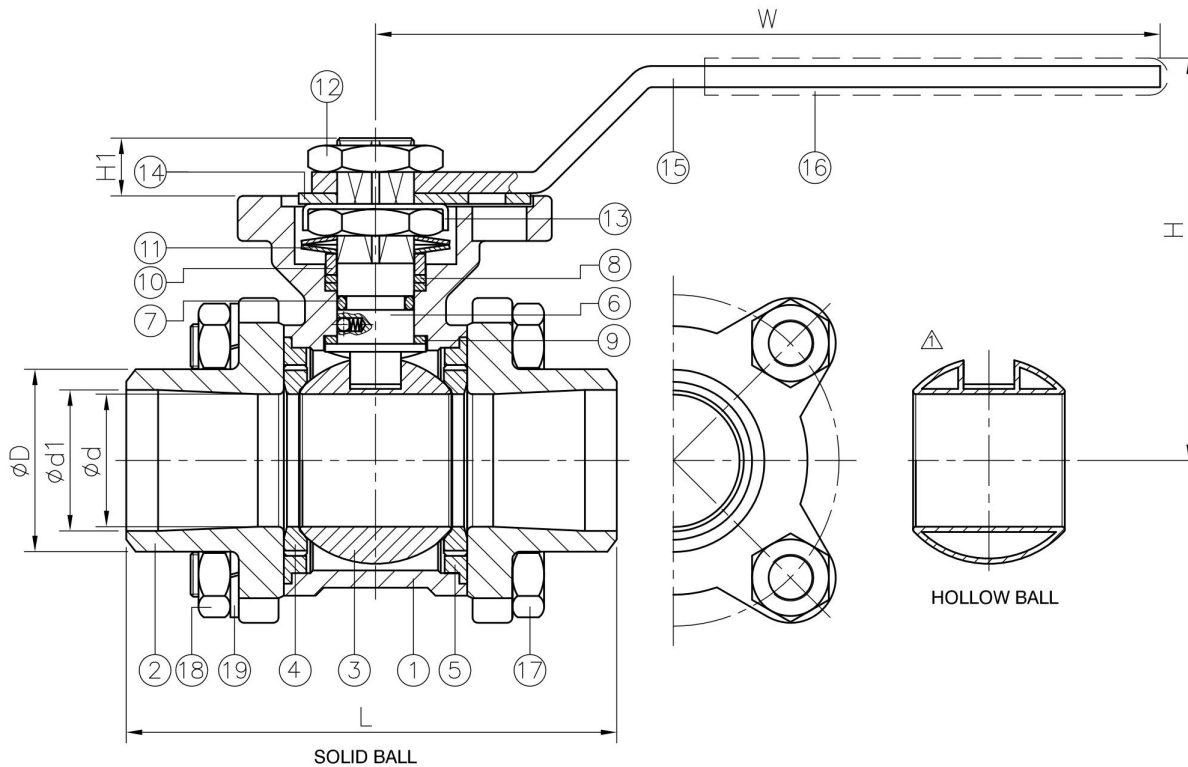
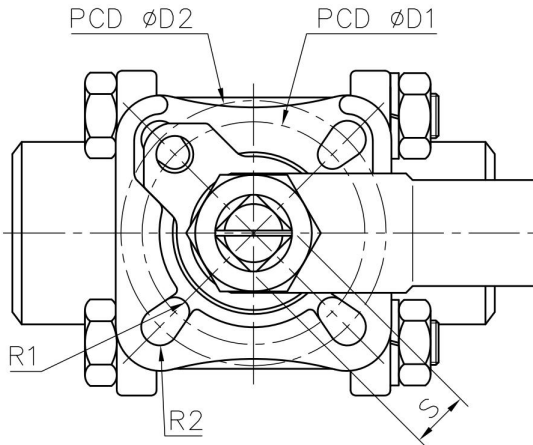


DN	d	D	L	H	C	M	W	Weight(kg)
8	11.6	14.7	55	60	5	3/8"-24UNF	100	0.4
10	12.5	18.1	60	60	5	3/8"-24UNF	100	0.4
15	15	22.3	75	62	5	3/8"-24UNF	100	0.5
20	20	27.7	80	62	6.5	7/16"-20UNF	125	0.7
25	25	34.4	90	80	7.9	7/16"-20UNF	149	1.1
32	32	43.2	110	85	7.9	7/16"-20UNF	149	1.6
40	38	49.3	120	100	10	1/2"-20UNF	190	2.4
50	50	61.5	140	108	10	1/2"-20UNF	190	3.5
65	63	74.5	185	136	12	3/4"-10UNC	250	6.9
80	76	91	205	146	12	3/4"-10UNC	250	9.6
100	96	155.5	240	182	16	1"-8UNC	323	19.4

unit:mm

KHN7312HS –DN50

ITEM	PARTS	MATERIAL
1	BODY	ASTM A351-CF8M
2	CAP	1.4408
3	SOLID BALL	ASTM A351-CF8M
	HOLLOW BALL	ASTM A240-316
4	SEAT	PTFE / RTFE
5	SEAL	PTFE
6	STEM	ASTM A276-316
7	O-RING	VITON
8	PACKING	PTFE
9	THRUST WASHER	
10	GLAND RING	AISI 304
11	BELLEVILLE WASHER	AISI 301
12	STEM NUT	AISI 304
13	LOCK WASHER	
14	STOPPER	
15	HANDLE	STAINLESS STEEL
16	HANDLE SLEEVE	PVC
17	BOLT	AISI 304
18	NUT	
19	SPRING WASHER	

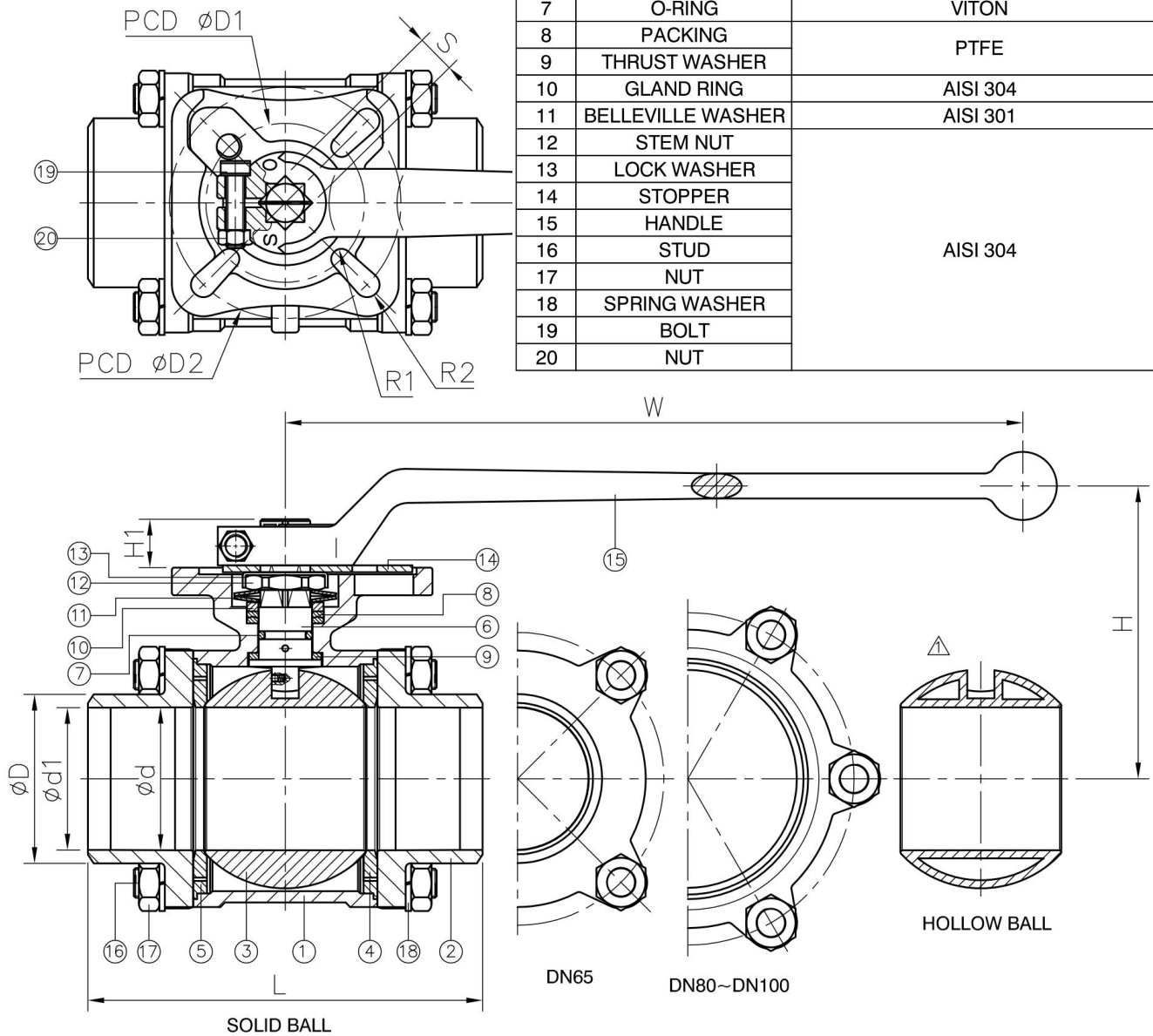


DN	d	d1	D	L	H	H1	W	S	D1	D2	R1	R2	Torque (N-M)	
													Breakaway	Action
15	15	15.8	22.3	75	62.7	7.1	114.5	9	36	42	2.75	2.75	7	4
20	20	20.9	27.7	80	65.1	7.3	114.5	9	36	42	2.75	2.75	9	5
25	25	26.6	34.4	90	76.5	11	140	11	42	50	2.75	3.5	15	9
32	32	35.1	43.2	110	82	9.5	140	11	42	50	2.75	3.5	18	11
40	38	40.9	49.3	120	102	12.4	172	14	50	70	3.5	4.5	25	15
50	50	52.5	61.5	140	110.1	13.6	172	14	50	70	3.5	4.5	35	21

unit:mm

KHN7312HS DN65 – DN100

ITEM	PARTS	MATERIAL	
1	BODY	ASTM A351-CF8M	
2	CAP	1.4408	
3	SOLID BALL	ASTM A351-CF8M	
	HOLLOW BALL	ASTM A240-316	
4	SEAT	PTFE / RTFE	
5	SEAL	PTFE	
6	STEM	ASTM A276-316	
7	O-RING	VITON	
8	PACKING	PTFE	
9	THRUST WASHER		
10	GLAND RING	AISI 304	
11	BELLEVILLE WASHER	AISI 301	
12	STEM NUT	AISI 304	
13	LOCK WASHER		
14	STOPPER		
15	HANDLE		
16	STUD		
17	NUT		
18	SPRING WASHER		
19	BOLT		
20	NUT		



DN	d	d1	D	L	H	H1	W	S	D1	D2	R1	R2	Torque (N-M)	
													Breakaway	Action
65	63	62.7	74.5	185	127.3	16.3	325	17	70	102	4.5	5.5	55	33
80	76	77.9	91	205	136.3	16.3	325	17	70	102	4.5	5.5	70	42
100	96	102	115.5	240	142.5	20.5	325	22	102	125	5.5	6.5	90	54

unit:mm