

WEICHDICHTENDER SCHIEBER SC2090



TECHNISCHE DATEN

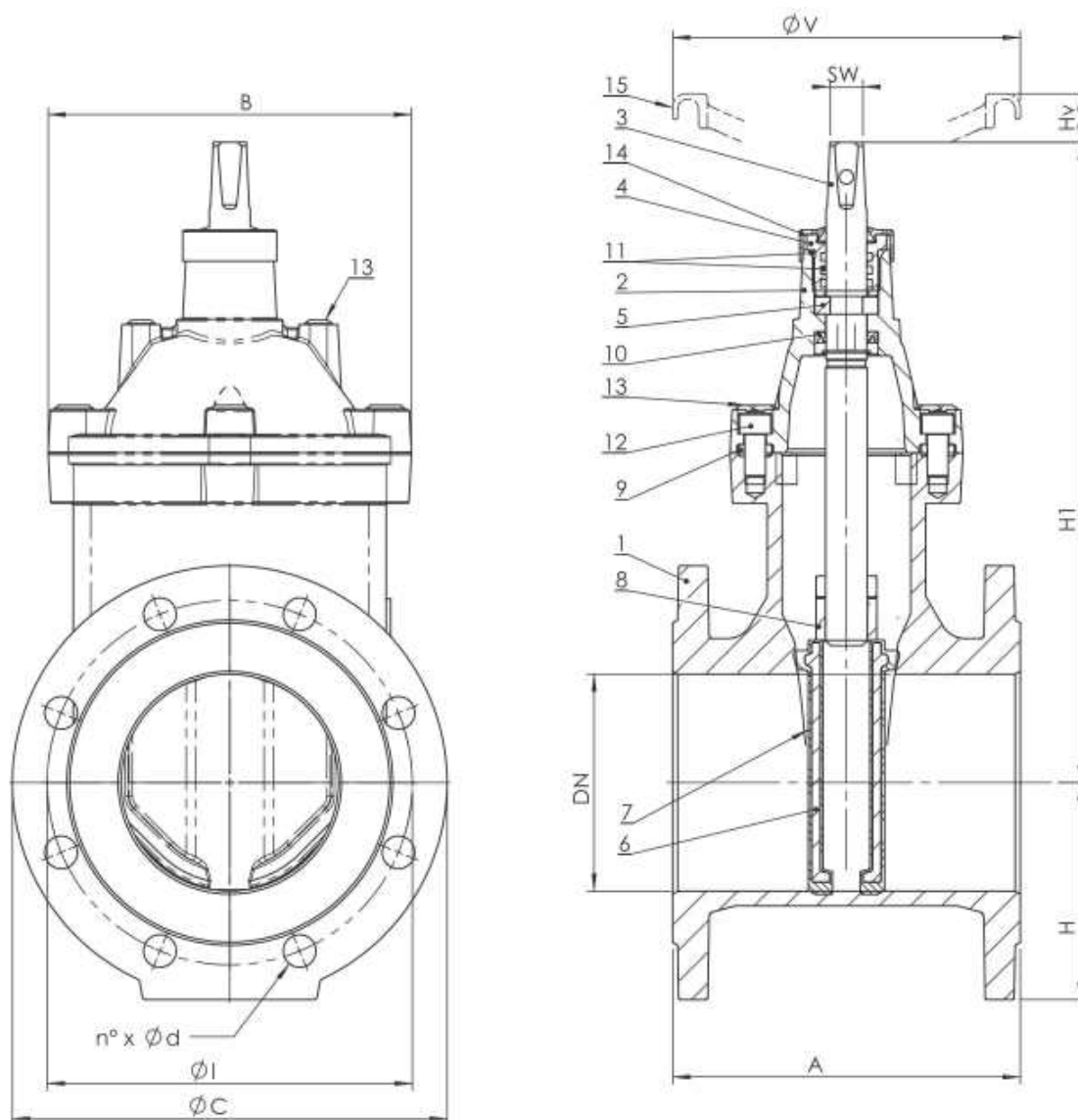
Gehäuse: GJS500-7

Dichtung: EPDM

Anschluss: Flansch PN16

Betriebstemp.: -10°C – +70°C

Lieferbar von DN40 – DN350



Materials

	Component	Material
1	Body	EN GJS500-7 EN1563
2	Bonnet	EN GJS500-7 EN1563
3	Stem	X20Cr13 EN10088 (AISI 420)
4	Ring	Brass CW614 EN12164
5	Thrust bearing	Bronze
6	Wedge	EN GJS400-15 EN1563, EPDM or NBR coated
7	Wedge sliding caps	Poliamide PA66
8	Wedge nut	Brass CW614 EN12164
9	Bonnet seal	EPDM
10	Lip seal	NBR
11	O-ring	NBR
12	Screws	Galvanized steel
13	Screw cover cap	Polyethylene
14	Dust guard	NBR
15	Hand Wheel	Carbon steel epoxy coated

Dimensions (mm)

DN		40	50	65	80	100	125	150	200	250	300	350
A	EN558/1 14	140	150	170	180	190	200	210	230	250	270	290
H1		208	222	247	300	322	369	408	531	610	689	845
H		75	82,5	92,5	100	110	125	142,5	170	202,5	230	260
B		128	128	145	162	181	209	239	305	362	422	-
V		160	160	160	200	200	250	250	300	380	450	320
Hv	approx.	20	20	20	30	30	36	36	38	38	38	38
SW		14	14	14	19	19	19	19	27	27	27	27
D		150	165	185	200	220	250	285	340	405	460	520
I	EN1092-2 PN16	110	125	145	160	180	210	240	295	355	410	470
n° x d	EN1092-2 PN16	4x19	4x19	4x19	8x19	8x19	8x19	8x23	12x23	12x28	12x28	16x28
I	EN1092-2 PN10	110	125	145	160	180	210	240	295	350	400	460
n° x d	EN1092-2 PN10	4x19	4x19	4x19	8x19	8x19	8x19	8x23	8x23	12x23	12x23	16x23

Weight (kg)

20.900	Free shaft	8,8	10,2	13,9	15,7	20,5	26,1	34,6	56,5	86	116	150
--------	------------	-----	------	------	------	------	------	------	------	----	-----	-----

Operating torque (Nm)

Dp 16 bar		48	48	48	70	70	100	100	120	180	225	500
-----------	--	----	----	----	----	----	-----	-----	-----	-----	-----	-----

Head loss Fluid: water (1m H₂O = 0,098bar)

