

**RVN8001 STAINLESS STEEL CHECK VALVE PN40**



**Size :** DN 15 to DN100  
**Ends :** Between flanges PN10/16/25/40 and Class 150  
**Min Temperature :** - 20°C  
**Max Temperature :** + 200°C  
**Max Pressure :** 40 Bars  
**Specifications :** Spring type  
All positions  
Metal / metal

**Materials :** Stainless steel

**SPECIFICATIONS :**

- Spring type
- All positions (respect the flow direction indicated by the arrow)
- Short length
- Disc rib guide for a better centering
- Full stainless steel corrosion resistant and for high temperature
- Metal / metal tightness

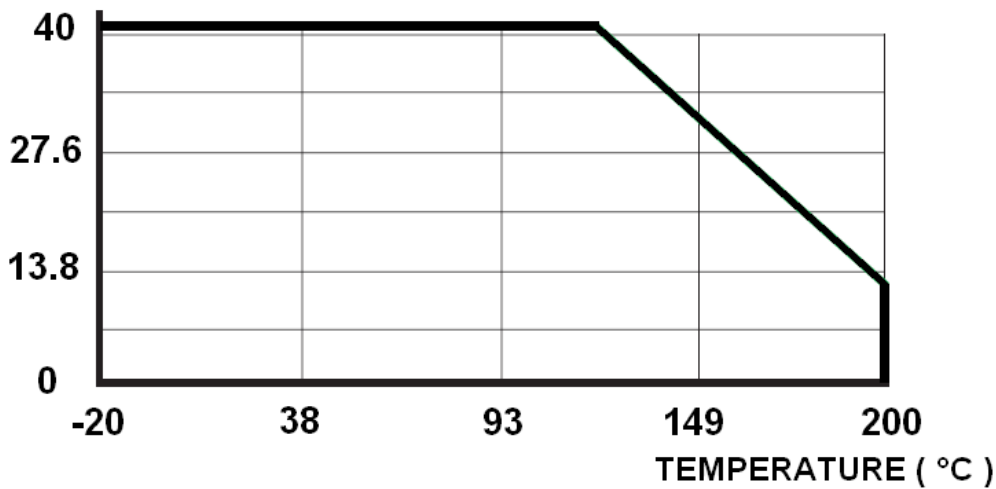
**USE :**

- Chemical and pharmaceutical industries, petrochemical industries, hydraulic installation, compressed air
- Min Temperature Ts : - 20°C
- Max Temperature Ts :+ 200°C
- Max Pressure Ps : 40 bars ( see graph under )

**PRESSURE / TEMPERATURE GRAPH ( STEAM EXCLUDED ) :**

**PRESSURE**

**( Bar )**



**FLOW COEFFICIENT Kvs ( M3 / h ) :**

DN	15	20	25	32	40	50	65	80	100
Kvs ( m3/h )	2.1	5.76	9.6	14.5	21.9	24.2	57.1	64.97	90.2

**RANGE :**

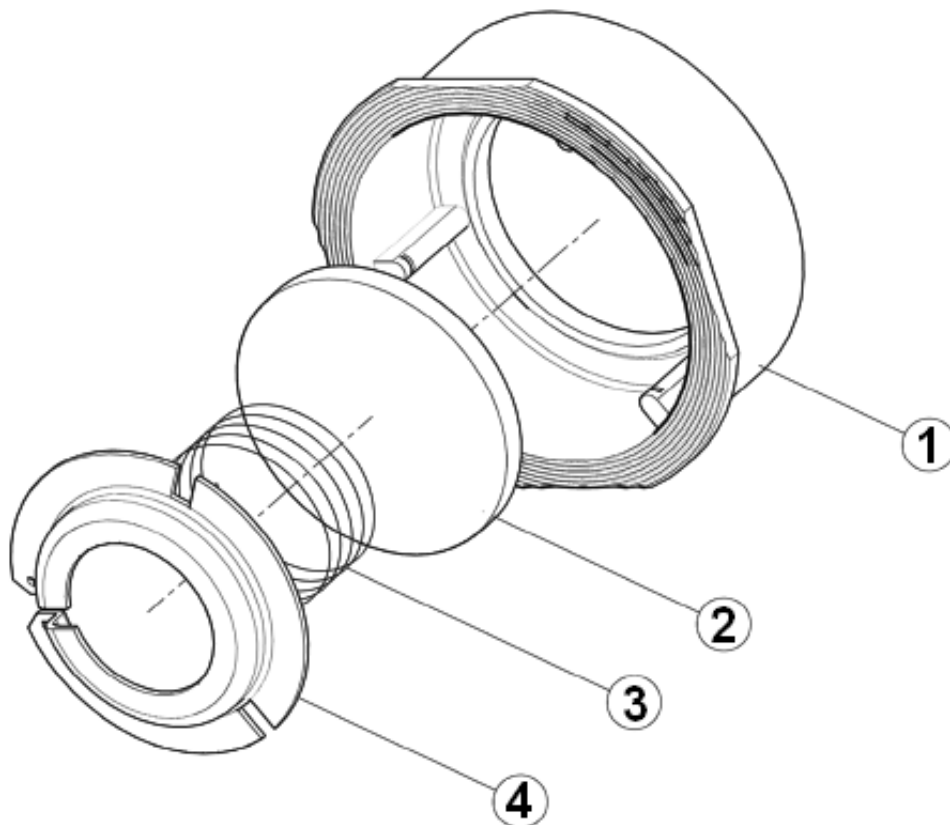
- Between PN10/16/25/40 flanges and Class 150 (PN20)



**OPENING PRESSURE ( in mbar ) :**

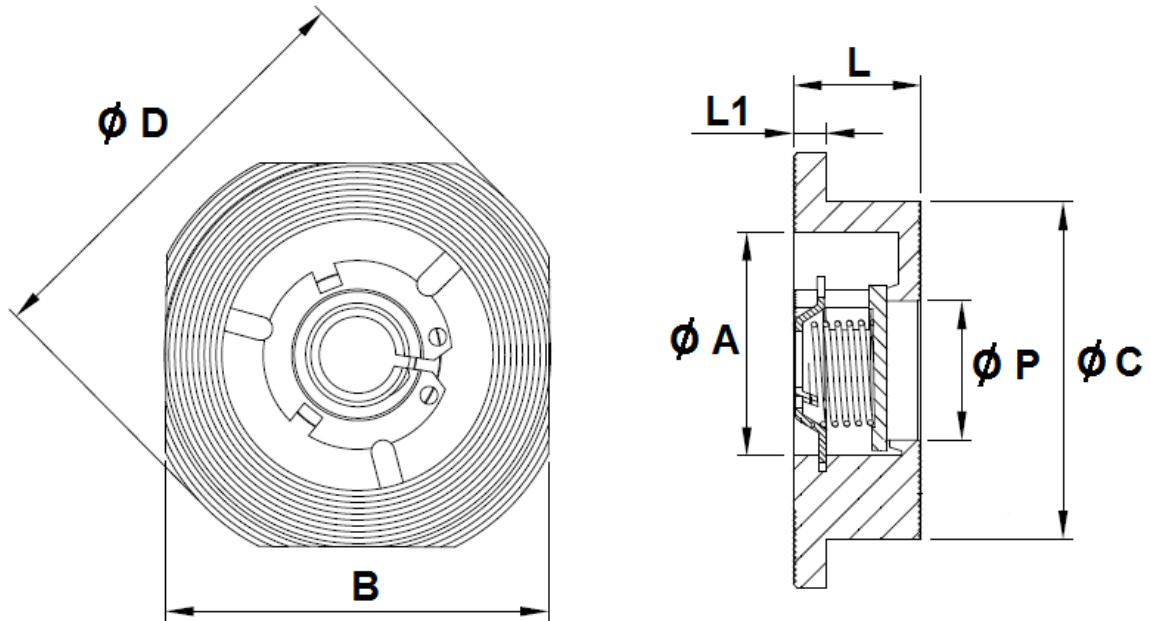
DN	Vertical Position Ascending fluid	Horizontal Position
DN 15	25 ↑	23 →
DN 20	25 ↑	23 →
DN 25	25 ↑	23 →
DN 32	27 ↑	24 →
DN 40	29 ↑	25 →
DN 50	29 ↑	25 →
DN 65	31 ↑	25 →
DN 80	32 ↑	26 →
DN100	33 ↑	27 →

**MATERIALS :**



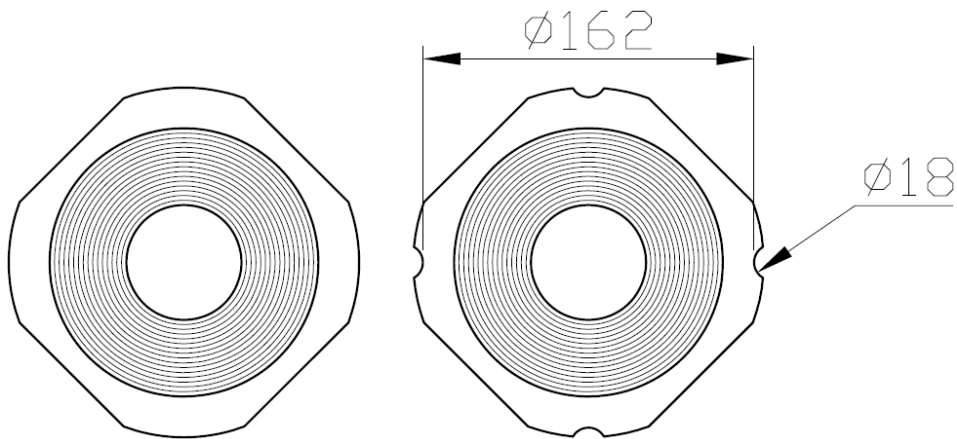
Item	Designation	Materials
1	Body	ASTM A351 CF8M
2	Disc	ASTM A240-316
3	Spring	SS 316
4	Spring holder	ASTM A240-316

**SIZE ( in mm ) :**



**DN 15 – 80**

**DN100**



Ref.	DN	15	20	25	32	40	50	65	80	100
RVN8001	$\varnothing A$	34	39	46	60	70	79	101	109	134
	B	44.6	54	65	78	88	101.6	120.4	133	164
	$\varnothing C$	40.5	47	56	70	80	90	113	123	150
	$\varnothing D$	54	62	73	83	93	107	126.5	141.2	171.4
	L	16	19	22	28	31.5	40	46	49	60
	L1	3.5	3.5	4	5	5	5	5.5	5.5	6.5
	$\varnothing P$	12.5	20	25	32	38	49	64	78	98
	Weight ( Kg )	0.1	0.2	0.3	0.5	0.6	0.9	1.4	2	3